



AZ-112-LED

Dusk-to-dawn sensor

Index: AZ-112-LED

Light dependent relay serves to switch-ON the lighting of streets, squares, shop windows, neon lamps etc, at twilight and to switch-OFF afore mentioned lighting at dawn.

Supply 230V AC. On rail TH-35. 16A. With probe Ø10.

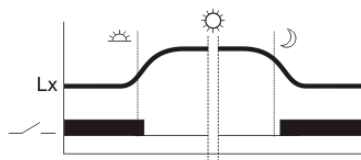


FUNCTIONING

DESCRIPTION

Functioning:

The external probe should be situated at place with permanent access to day light, which, due to its changes of intensity, will cause switching ON and OFF the lighting. The exact time of switching the lighting can be set by potentiometer by the user. Turn in the direction of "half moon" will delay switching-ON, turning in the direction of "sun" will advance switching-ON. - 1 The relay is equipped with a delay system, which delays switching ON and OFF the lighting, thus eliminating the influence of accidental disturbances like thunder lightings on the relay functioning.



Attention!

In case of the length of the cable probe longer than 10m, should not be lead close to parallel power cable.

Attention!

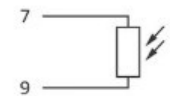
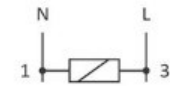
In the case of control measures light dependent relay tightly cover the entire appliance, such as a cardboard box or a dark, thick cloth. Cover only the "eye" the probe, such as the finger is not enough, because the intensity of sunlight is very strong and is passes to f by a plastic cover and the human body.

Attention!

There is possibility of a special implementation of automatic voltage other than those indicated in the table of technical data, such as 12V, 24V, 48V and 110V AC / DC and others.

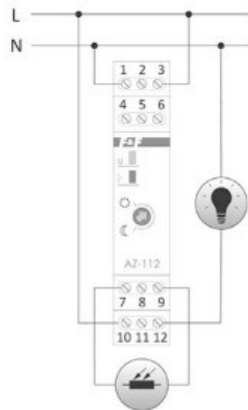
SCHEME

Opis wyprowadzeń



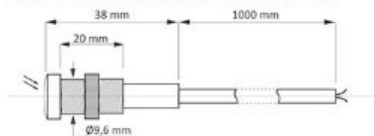
1-3 zasilanie 230 V
7-9 zaciski sondy
10-12 styk separowany NO

Schemat podłączenia



Sonda zewnętrzna hermetyczna $\phi 10$

Mały, łatwy w montażu czujnik światłoczuły standardowo wyposażony w 1-metrowy przewód z możliwością przedłużenia do 10 m. Połączenie przewodów wykonać w puszcze hermetycznej lub w miejscu odizolowanym od wpływów atmosferycznych.



! Przewodów sondy nie należy prowadzić blisko równoległych przewodów będących pod napięciem sieci i przewodzących duże prądy.

TECHNICAL DATA

| | |
|---|----------|
| Rated voltage | 230 V |
| Rated frequency | 50-50 Hz |
| Max. incandescent lamp load | 2000 W |
| Max. load fluorescent lamp | 600 VA |
| Max. load fluorescent lamp (parallel compensated) | 750 VA |

| | |
|--|-----------|
| Rated switch current | 16 A |
| Adjustment range brightness value | 2-1000 lx |
| Mounting method light sensor | Other |
| Mounting method | DIN rail |
| Degree of protection (IP) | IP20 |
| Degree of protection (IP) light sensor | IP65 |
| Max. switching power LED | 250 W |
| Width in number of modular spacings | 1 |
| Max. conductor length light sensor | 10 m |
| Max. switching current (cos phi = 0.6) | 12 A |
| Built-in depth | 65 mm |
| Max. load fluorescent lamp (Duo circuit) | 0 VA |
| Rated voltage light sensor | 0 V |

[Manual](#)

[CE Declaration](#)